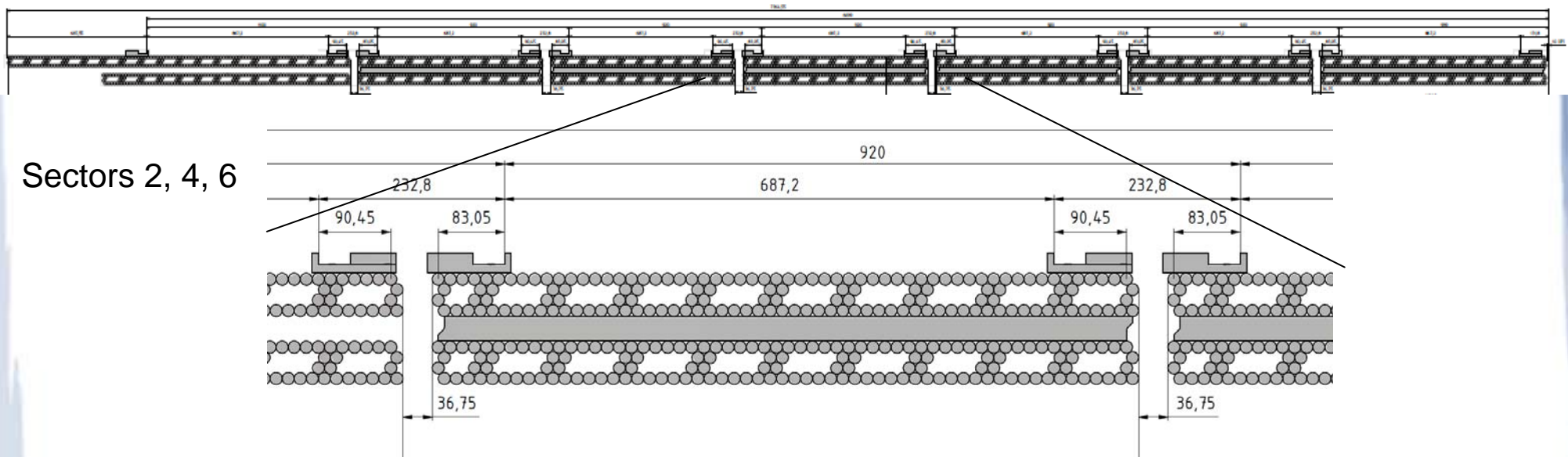


Status 5.1 BIS sMDT Phase-2

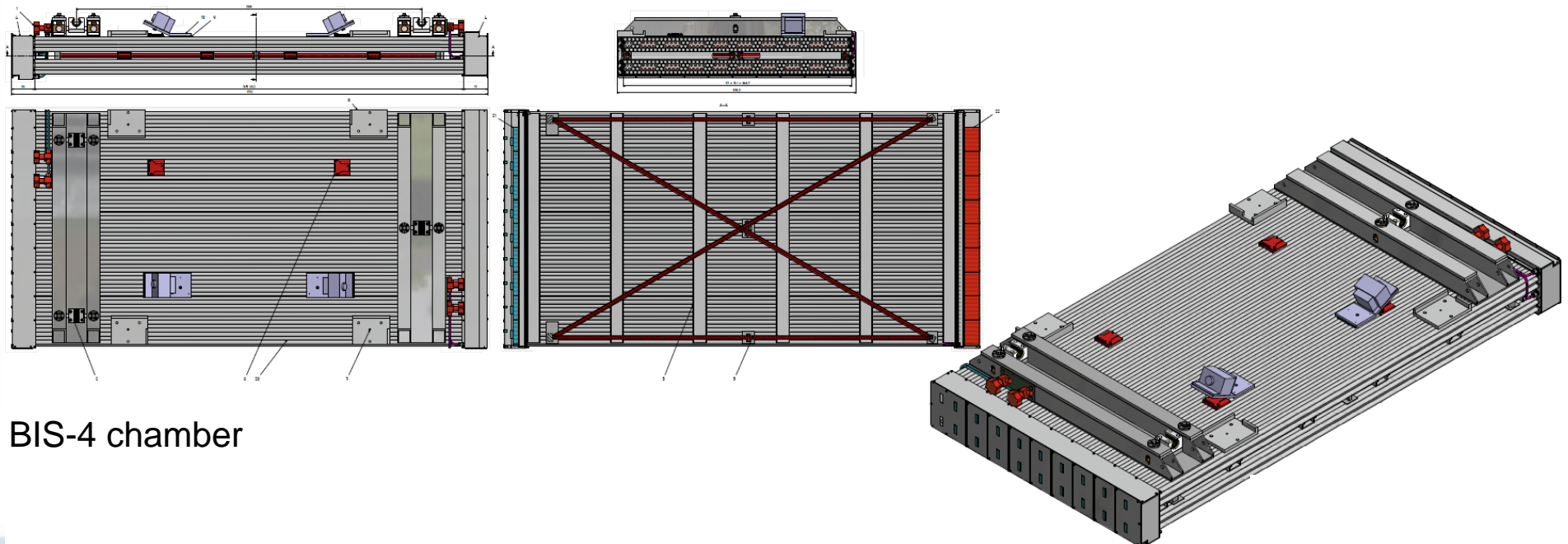
Hubert Kroha
Max-Planck-Institute for Physics, Munich

ATLAS Week, 11.10.2018

BIS 1-6 sMDT chamber layout and geometry and drift tube length decided:



⇒ BIS sMDT chamber design in progress (as update of the BIS78 design):

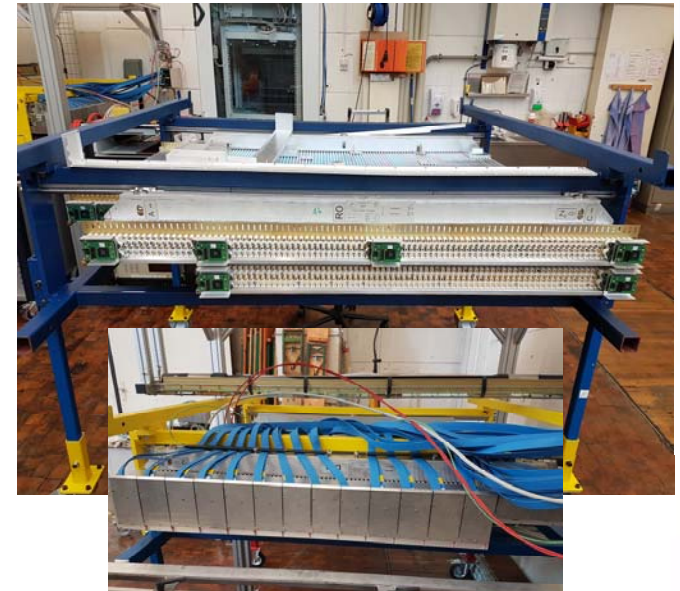
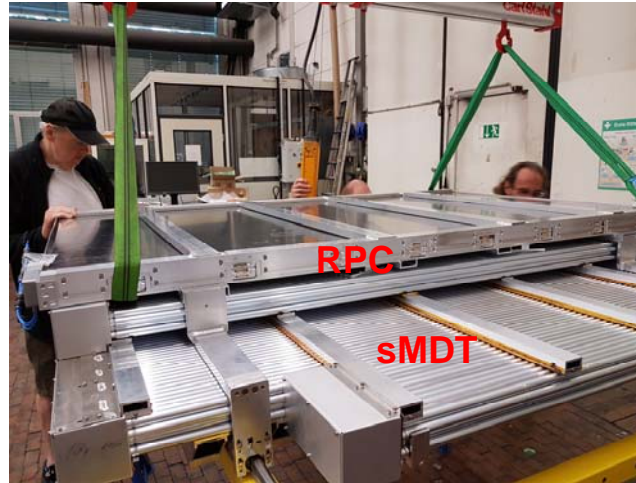


BIS-4 chamber

Preparation of production sites (MPI Munich, Univ. of Michigan, MSU) and of the procurement of the drift-tube components started.

50% of BIS78 sMDT construction completed at MPI Munich. 10 μm rms wire positioning accuracy.

Integration with RPC successfully tested. All services details studied.



Prototype sMDT chamber (BMG type) successfully assembled at Univ. of Michigan including verification of wire pos. precision, fulfills requirements, drift tube prod. at MPI facility by Michigan personnel:



QA/QC wire pos. measurement tools from BIS78 construction tested



Milestones

Milestones	Expected date
5.1.1 BIS sMDT detector	
FDR/PRR drift tubes	October 2018
PDR/FDR chambers	March 2019
Start drift tube production	May 2019
Completion construction facilities	August 2019
Completion chamber pre-prod.	November 2019
PRR chambers	December 2019
Start chamber production	March 2020
Completion chamber production	November 2023
Completion commissioning	December 2023